

AT HOME!

PROJECT NO.6

Junk Box Modelling

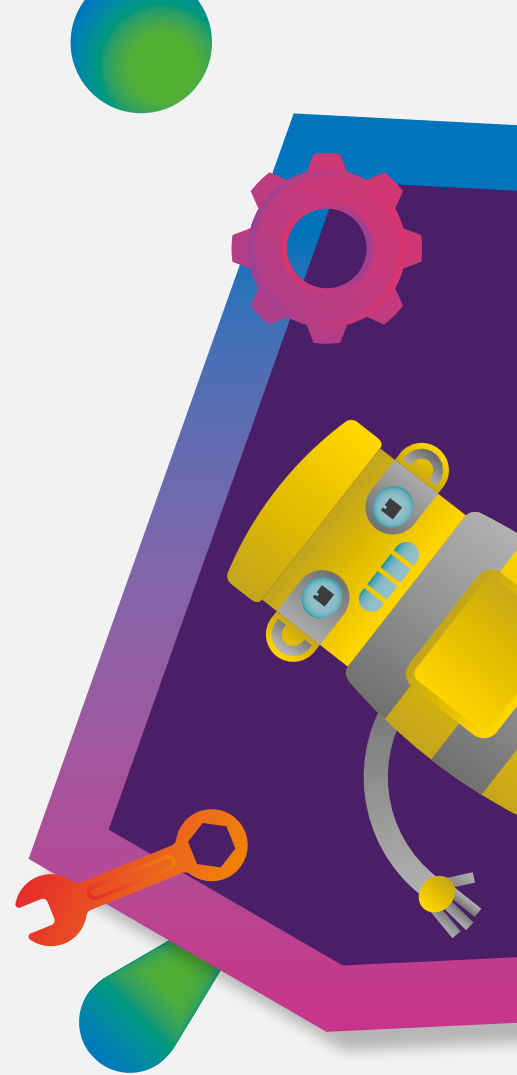
As family days out are put on hold, we've been thinking how we can make your family days in as much fun as possible.

Eureka! is the UK's only hands-on museum just for children aged 0-11. Full of exhibits to explore, helpful staff to engage with, activities to do and buttons to press. Based in West Yorkshire, we have brought smiles to the faces of over 8 million visitors since 1992. As families can't come to us, we are keen to bring a sample of the Eureka! experience to you.

Our expert staff have come up with a series of experiments that can be done at home, all designed to inspire children to get hands-on, have fun, and learn about themselves and the world around them.

Get experimenting and send us or share your pictures and videos using #EurekaAtHome and we'll share on our social media feeds too.

WE'RE ALL IN THIS TOGETHER!

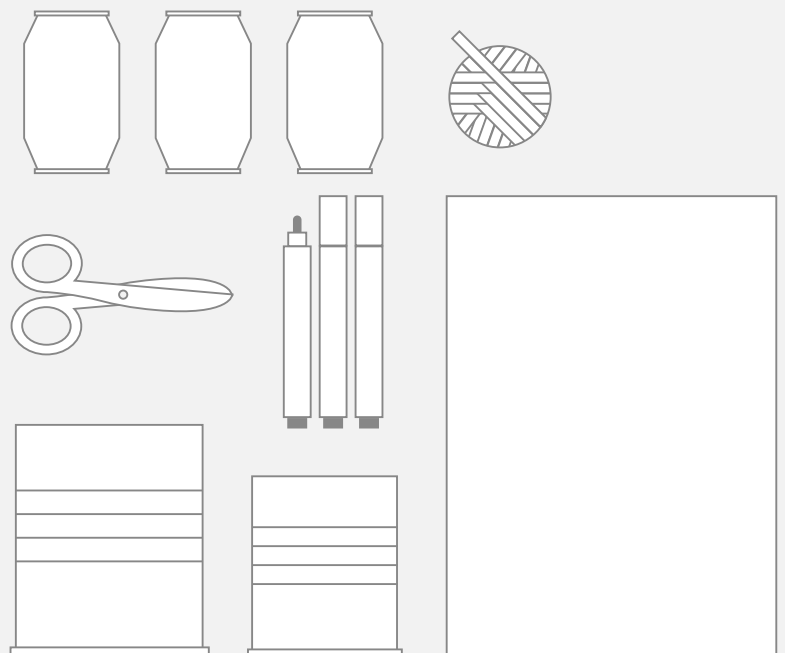


JUNK BOX MODELLING

It's amazing what you can make with the contents of your recycling bin! Can you be inspired to create something new from something which you'd otherwise be throwing out? It's easier than you may think... here's one idea, but you really can make anything you can dream up!

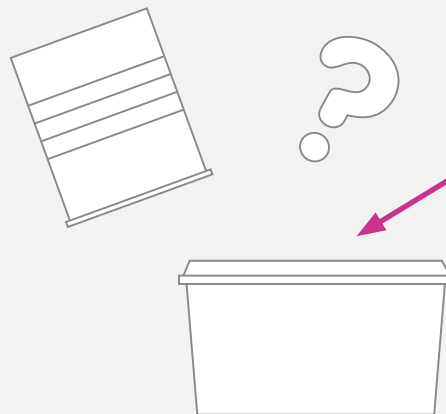
TIN CAN ROBOT, YOU WILL NEED:

- String
- 4 thin drinks cans
- A standard tin can (like a baked beans can)
- A larger tin can
- Card and material for decorations



STEP 1:

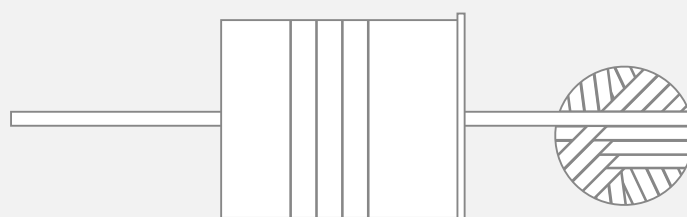
Choose which of your tins will be which part of your robot. If you have a collection of tins suggested in the list above the standard can is the head, the thinner cans are the arms and legs, and the bigger can is the body.



Top Tip:
you can make your robot any way you choose. You can even make him out of margarine tubs, or other items if you don't have tin cans.

STEP 2:

Get an adult to make a small hole in the closed end of each of the cans. Just big enough to get your string through.

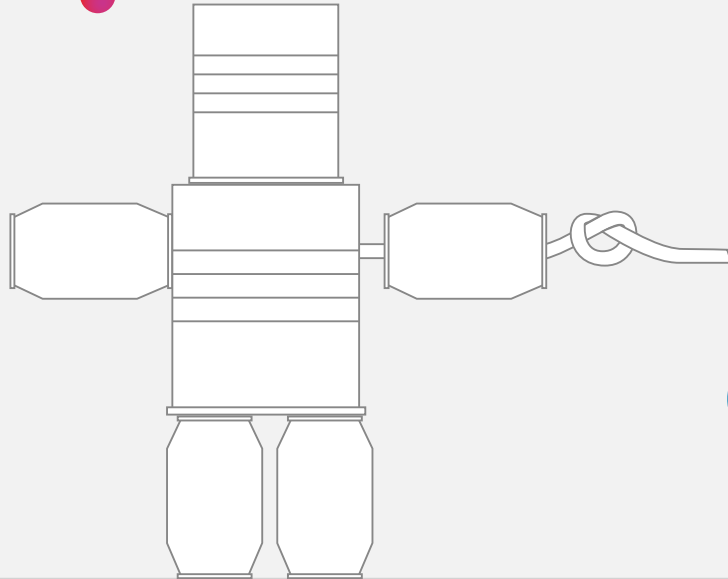


NOTE: Please be careful using old tin cans, sometimes the edges can be quite sharp. Ouch!

JUNK BOX MODELLING

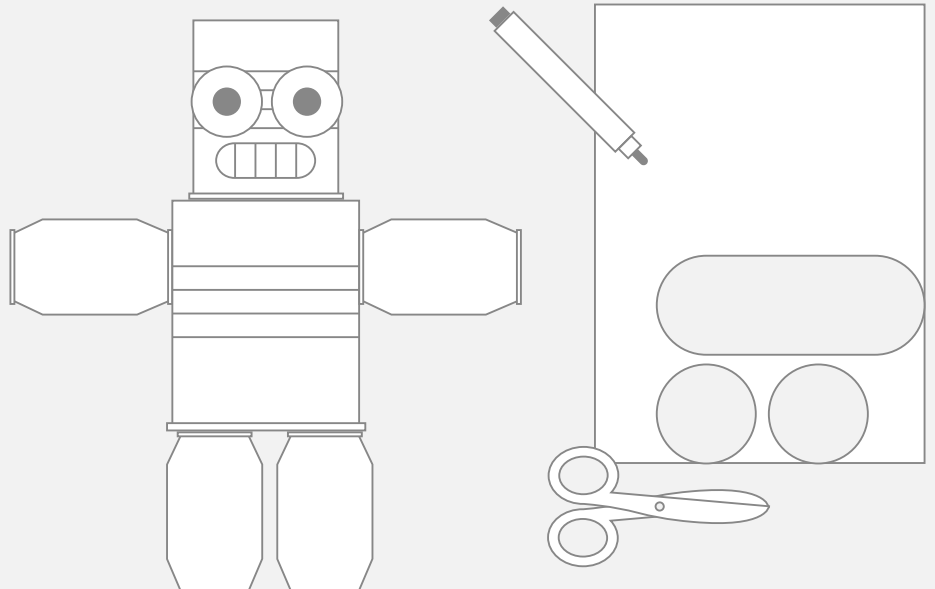
STEP 3:

Use the string to attach each can to the body. You can do this by tying a knot in the string and threading it through the hole you've made.



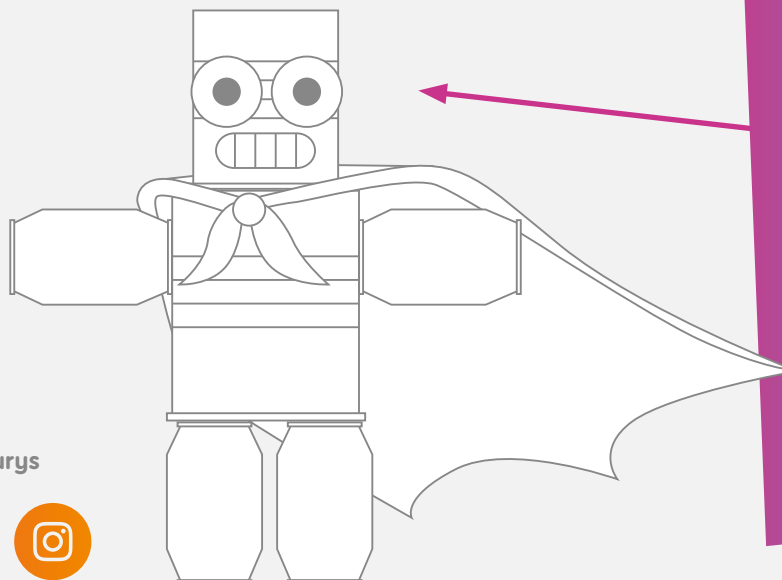
STEP 4:

Once your robot has been assembled, you can cut out shapes and stick them on to give your robot some features... perhaps a nice smiley face, or a Frankenstein face. Make a card cone for a hat, or use some old wool for hair? If you're feeling very artistic can you make your robot look like a well known character?



STEP 5:

If your robot wants to look extra special, you can even give it some clothes using tissue paper, or old materials.



Top Tip:

If you have some string left over, you can attach this to the top of your robot's head, and make your robot walk or dance. Can you use your robot to put on a puppet show?

CREDIT:

Josie Curran, Bumper Book of Summer, published by Sainsburys



NOTE: Please be careful using old tin cans, sometimes the edges can be quite sharp. Ouch!